



# Archgard

FIREPLACES



3600 DVTR24N

Zero Clearance

The 3600 DVTR24N is a true zero clearance gas fireplace that requires no stand-offs for installation. This Enerchoice rated fireplace is top or rear vent convertible and is designed to fit in shallow spaces while maintaining one of the largest viewing areas in its class.

**FIREBRICK OPTIONS**

**SURROUNDS & DOOR SIZES**



3600 - Louvre Kit, Black  
3600-LKB



Sunburst, Top & Bottom  
3600-SBB



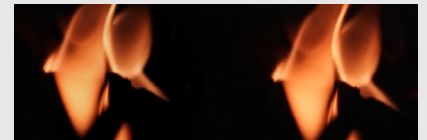
Front, Arch, Black  
3600-FAB



3600-BRPL-QCG /Brick Panel,  
Québec City Grey

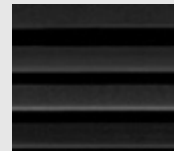


3600-BRPL-QCR /Brick Panel,  
Québec City Red

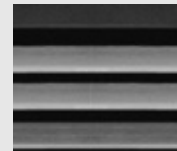


3600-BRPL-RG /Eternal Flame  
Reflective Ceramic Glass

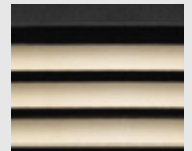
**LOUVERS OPTIONS**



3600-LKB /  
Louvre Kit, Black



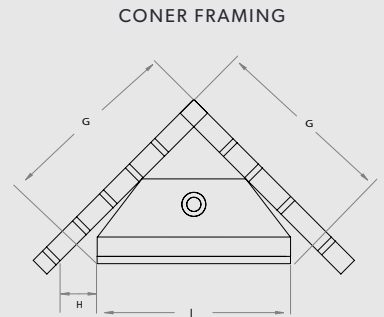
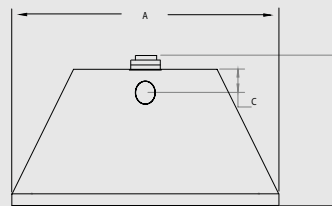
3600-LKBN /  
Louvre Kit, Nickel



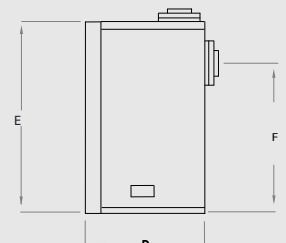
3600-LKGP /  
Louvre Kit, Gold

Input Rating	
Natural Gas	17,000-24,000 BTU/HR 4.98 -7.03 KW/HR
Propane	19,000-24,000 BTU/HR 5.57-7.03 KW/HR
Efficiencies	
Steady State	87%
Afue Efficiency	76%
P4	63.43%
Clearance to Combustibles	
Minimum fireplace opening	36-1/2" W x 33-1/4"H x 16-1/2"D
Viewing Area	31"W x 20"H
Mantle Clearance	38" from bottom of unit to bottom of 8" mantle
Standard Features	
Ceramic Glass	Included
Barrier Screen	Included
Firebox Construction	Welded/rivet and gasket, silicone free
Warranty	Elite limited lifetime
Burner Type	Wall to wall steel pan w/ lifetime warranty
Fan Kit	Included
Propane Conversion Kit	Optional

**TECHNICAL DIMENSIONS**



A	B	C	D	E	F	G	H	I
36"	16-1/8"	4-9/16"	14"	33"	25-1/4"	35-3/8"	6"	36"
914mm	406mm	102mm	356mm	838mm	635mm	889mm	146mm	914mm



**TECHNICAL SPECIFICATIONS**

Tested and Approved to Noth America Standards ANSI Z21.88B-2014/CSA 2.33-2014 and CAN/ CGA-2.17-M91

\*All fireplaces come standard with barrier screens which attach to the door with very little effort.



Archgard Fireplace Products  
7116 Beatty Drive Mission BC V2V 6B4  
archgard.com